



Bridging Tradition & Technology

The Future of Your Enterprise in the Age of Artificial Intelligence (AI)

Robert Mwesige, CMC, FCIMC, EMBA, MBA



The Strategic Advantage

Expert Advisory for Modern Business in Uganda

Is Your Organization Future-Ready?



Rapid Disruption

AI & Cloud technologies are no longer optional. Navigating these shifts requires expert technical knowledge.



Complexity

Navigating Bank of Uganda and EAC compliance requires a deep understanding of local regulatory landscapes.



The Skills Gap

Preparing for the "Future of HR and AI in Africa" demands talent strategies built for global excellence.

Meet the Expert: Robert Mwesige



Accredited Excellence

CMC & FCIMC: Certified Management Consultant and Fellow (2026).

EMBA: Quantic School of Business and Technology, Washington, DC, USA.

MBA: Marketing, Dr. D. Y. Patil Vidyapeeth, Pune, India.

First-Class Honors: International Development Studies, KYU Kampala.



Five Strategic Pillars



**Digital
Transformation**



**Corporate
Strategy**



HR Management







AI Integration



**Executive
Coaching**



Specialized ILO Certification & Technical Expertise

-  **SME Productivity Specialist:** Expert in using BOU & ILO tools to enhance SME performance and working conditions.
-  **SCORE Program Expert:** Trained in ILO's modular program for SMEs, specifically focusing on SIYB.
-  **Risk Mitigation:** Integrating financial sustainability with competitive and responsible enterprise practices.
-  **International Standards:** Fully aligned with the ILO Social Finance Programme's interactive methodology.

Financial Education Mastery

Bank of Uganda Partnership

Certified trainer with a proven track record of empowering diverse communities through financial literacy.

-  Budgeting & Savings Discipline
-  Debt Management Strategies
-  Financial Integrity Training



Digital Transformation Roadmap

01



Cloud Adoption

Google Suite (Google Workspace) & AI

02



Data Intelligence

Insights from Mobile Money data

03



Automation

ERP & digital workflow integration

04



Cyber Resilience

Protecting regional digital assets



Resilient Business Models

Market Entry

Navigating local content laws for international firms looking to enter Uganda.

PESTEL Analysis

Environmental scanning focused on EAC economic trends and political stability.



HR Advisory & Talent Excellence

- ✓ **Strategic Headhunting:** Blending local nuances with international standards.
- ✓ **Data-Driven Performance:** Implementing KPIs/OKRs that reward high impact.
- ✓ **Organizational Design:** Structuring for agility in a VUCA world.
- ✓ **Employer of Choice:** Compelling EVP for the competitive Kampala market.



AI Integration & Future of Work

Practical Implementation

Moving beyond hype to ethical and practical AI integration that delivers measurable ROI.

"AI is an accessible tool for improving efficiency, not a distant concept."

Google Gemini

ChatGPT

Grammarly

Industry-Specific Mastery

Sector	Strategic Focus	Outcome
Fintech	BoU Compliance & Design	Interoperability & Growth
Agribusiness	IoT & Supply Chain	Global Market Access
Healthcare	HR Compliance & Scheduling	Improved Patient Care
Manufacturing	Lean Methodology & BPR	Reduced Waste & High Output

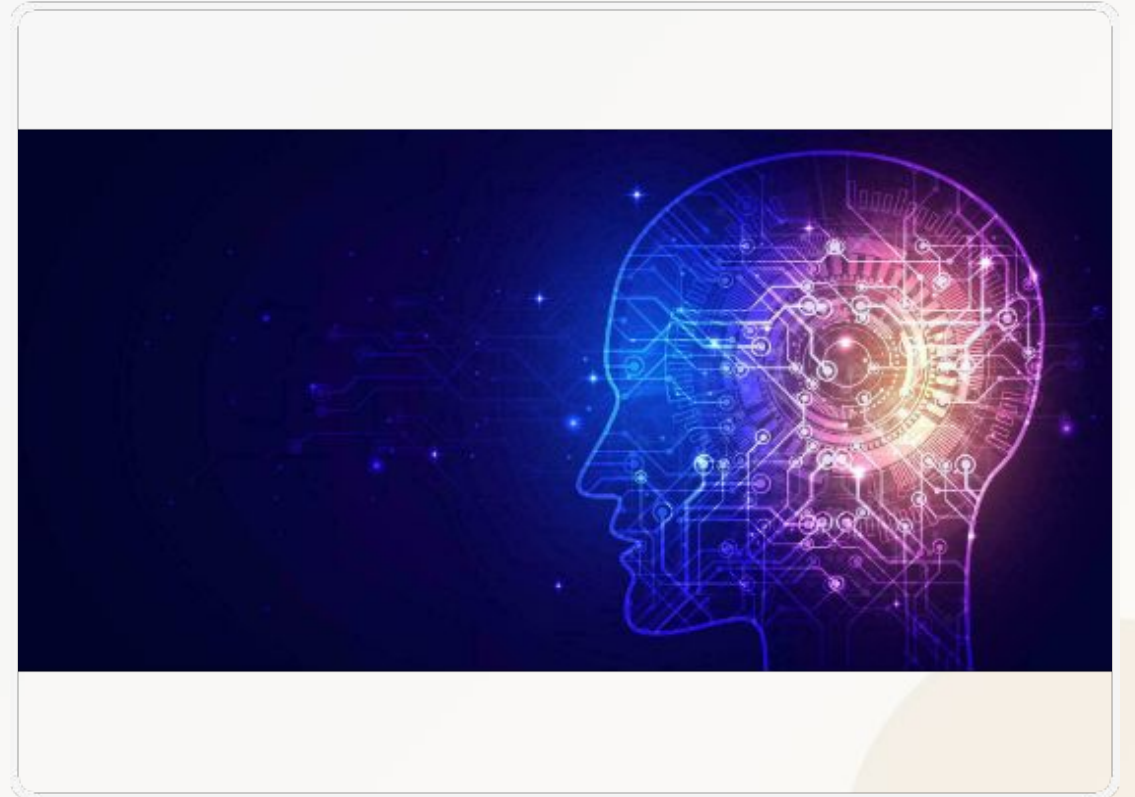


Modern Training Methodology

Pedagogical Excellence

Combining traditional adult learning principles (Andragogy) with cutting-edge digital integration.

-  AI Fluency (Microsoft/IOE Certified)
-  Google/HubSpot Digital Marketing Expert
-  Learner-Centered Retention Strategies



The ROI: Why Choose Robert?

40%

Efficiency Boost

Reduction in manual overhead through process automation.

The Value Proposition

- ★ Unified Vision: Tech, HR, and Strategy.
- ★ Data-Backed regional decisions.
- ★ Scalable sustainable growth.



Inclusion & Vulnerable Groups



Working with NGOs

Dealing with Communities Hosting significant displaced populations with diverse educational backgrounds.



Sustainable Livelihoods

Promoting agroecology and climate action for long-term food and financial security.



Inclusive Design

Designing interventions for the "bottom of the pyramid" with linguistic accessibility.

THE PATH FORWARD

Ready to Elevate?

Schedule a Strategic Diagnostic Session today and begin your organization's modernization journey.

Robert Mwesige Consulting

"Strategy is the heartbeat; Robert Mwesige is the architect."

Call/WhatsApp

+256782825945

Email

robertmwesige44@gmail.com

Website

www.robertconsulting.uk